

# Ultimate Source of Value: Topcon's Posterior Imaging Device for Researchers and Clinicians

**8** /Feb/2018

(Thu)

Venue : S421  
Time : 13:00 - 14:00

DAY  
**1**



## *Artificial Intelligence-assisted Ocular Disease Mass Screening Using Fully-automatic Fundus Camera*

### **Jimmy Liu, PhD**

Professor,  
Cixi Institute of Biomedical Engineering,  
Ningbo Institute of Industrial Technology, Chinese Academy of Sciences  
Ningbo Institute of Materials Technology and Engineering,  
Chinese Academy of Sciences



## *Clinical Benefits of Diabetic Microvascular Disease Evaluation Using Swept-Source OCT-Angiography*

### **Carol Cheung, MD**

Assistant Professor,  
Department of Ophthalmology & Visual Sciences,  
The Chinese University of Hong Kong

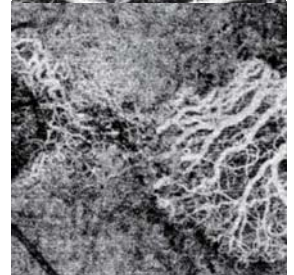
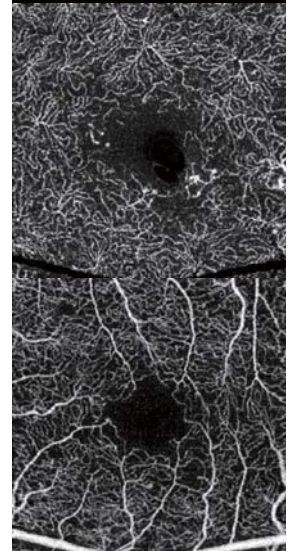
**Moderator**



## *OCT-A in Pachychoroid Disorder*

### **Gemmy Cheung, MD**

Associate Professor,  
Duke-NUS Graduate Medical School, Singapore  
Deputy Head and Senior Consultant, Medical Retina Service,  
Singapore National Eye Centre Clinical Director,  
Ophthalmic Imaging Department, Singapore National Eye Centre



# *An Update on the Detection and Management of Glaucoma with Swept Source OCT Triton*

**9** /Feb/2018

(Fri)

Venue : S421

Time : 13:00 - 14:00

DAY  
**2**

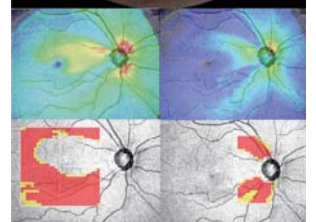
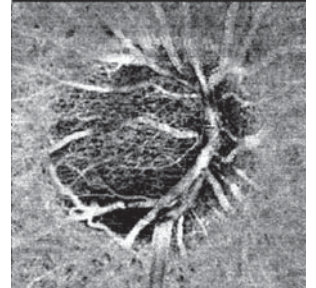
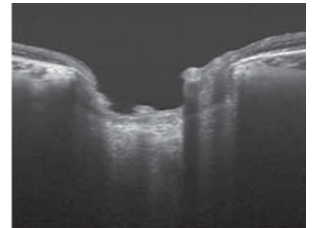
Moderator



*The Role of Triton: Glaucoma Detection And Management with Swept Source OCT and OCT Angiography*

**Professor, Kazuhisa Sugiyama**

Kanazawa University, Japan



*Evaluation of Deep Optic Nerve Head and Peripapillary Vasculature in Glaucoma*

**Professor, Tae Woo Kim**

Seoul National University Bundang Hospital



*Advances in Detecting and Monitoring Glaucoma with Swept Source Optical Coherence Tomography*

**Professor, Christopher Kai Shun Leung**

Chinese University of Hong Kong