

# ScanMaster CAD Link



## Perfect combination:

**AutoCAD® and ScanMaster provides tool for efficient, dynamic drawing**

A new optional feature on ScanMaster - "ScanMaster CAD Link" - that facilitate the ability to "draw" objects from scan data is now available. With the ScanMaster CAD Link, ScanMaster and AutoCAD screens are displayed side-by-side for seamless operation, allowing an operator to easily draw objects efficiently from data collected by Topcon's GLS-1500.

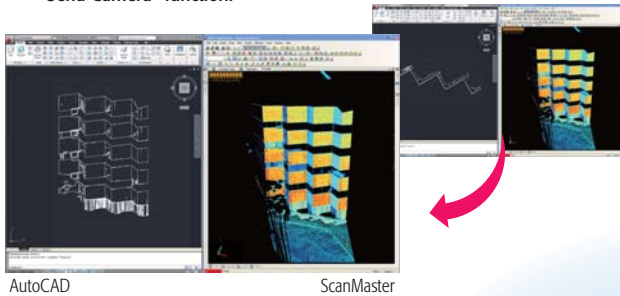


# ScanMaster CAD Link



**Point 1**

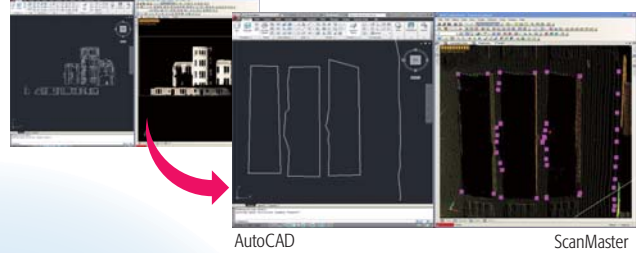
**Viewing angle of ScanMaster and AutoCAD can be aligned**  
View of AutoCAD and ScanMaster can be aligned in the same orientation by "Send Camera" function.



**Point 2**

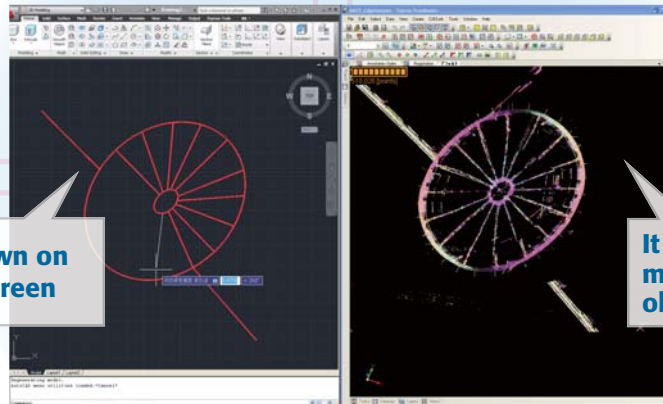
## Synchronizing Views of ScanMaster and AutoCAD

"Sync Camera" keeps viewing orientation of AutoCAD while ScanMaster view is rotated so that current drawing plane does not rotate.



**Drawing operation from the point-cloud data are made easy with the familiar commands of AutoCAD®.**

The viewing angle of ScanMaster and AutoCAD can be aligned in the same directions. Comparison between drawing and the original point-cloud data is instant and effortless.



Enlargement, reduction and/or moving of the created objects on the ScanMaster screen are synchronized with ones drawn on AutoCAD screen, allowing for real-time checking.

**Point 3**

**Poly line is drawn on the AutoCAD screen**

**It is easy and fast to make drawings of the objects on the scan data.**

**Point 4**

## Sending Ortho-images as a background UCS(User Coordinate System) will be set automatically

Ortho-image of scan data in current view can be sent to AutoCAD to use as a background image. The "Send Ortho-image" function sets UCS (User Coordinate System) so that new X-Y plane for drawing is parallel to the ortho-image plane.

Ortho-images can be sent to AutoCAD in the desired scale.



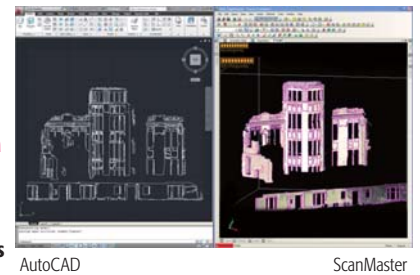
## Sending Existing Objects

If you already created drawing of objects in ScanMaster project, you can send them to AutoCAD.

Drawing data of object created by the rich function of ScanMaster can be sent to AutoCAD.

### Drawing / Editing functions of ScanMaster

- Points
- Polylines
- Planes
- Sections
- Contours
- Edge sets
- Tie points ( as points)
- Scan positions ( as points)
- Meshes
- Scans
- Clouds



## System Requirements

|    | Version   |         | Version                                     |
|----|---|---------|---|
| OS | 32-bit/64-bit Windows 7, 32-bit/64-bit Windows Vista, 32-bit Windows XP SP3 and later | AutoCAD | AutoCAD 2008 – 2013, AutoCAD LT 2008 - 2013 |



### TOPCON CORPORATION

75-1 Hasunuma-cho, Itabashi-ku, Tokyo 174-8580, Japan  
Phone: (+81)3-3558-2527/2521 Fax: (+81)3-3960-4214

Windows® is a registered trademark of Microsoft Corporation in the United States and other countries.

AutoCAD is a registered trademark or trademark of Autodesk, Inc., in the USA and other countries.

Designs and specifications are subject to change without notice. Product colors in this brochure may vary slightly from those of the actual products owing to limitations of the printing process.

Other trademarks and trade names are those of their respective owners.

©2012 Topcon Corporation All rights reserved.

**Your local Authorized Topcon dealer is:**